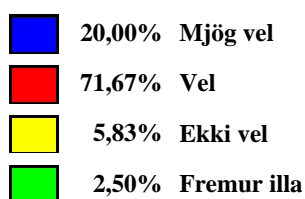
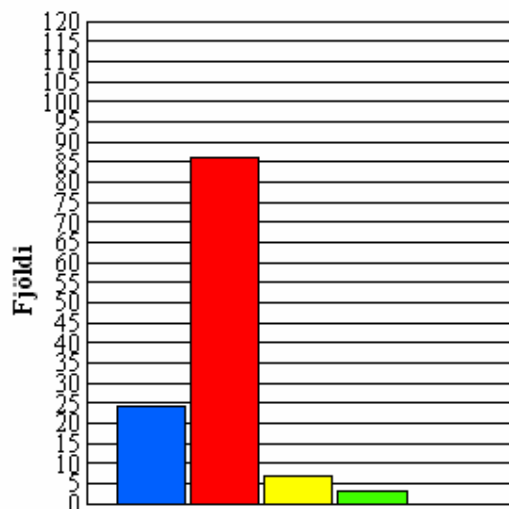


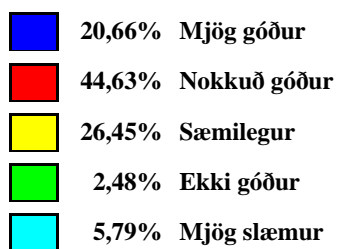
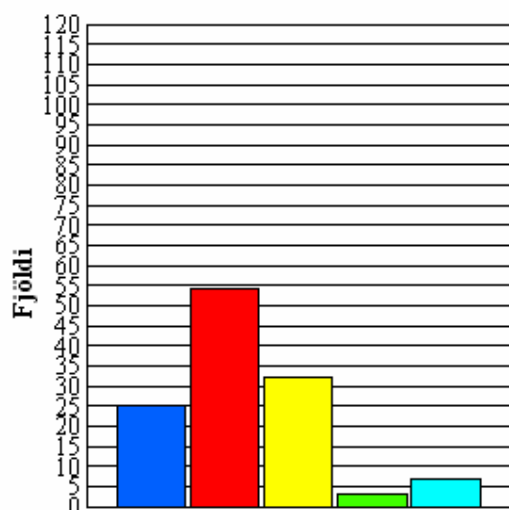
## Nemendur\_2006

### 1. Í skólanum líður mér oftast.....



Fjöldi svara: 120

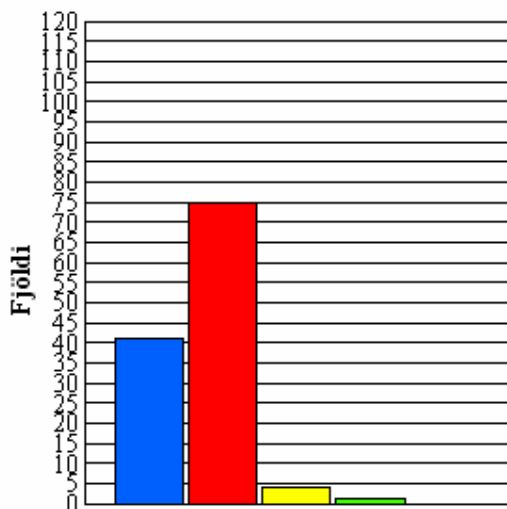
### 2. Mér finnst skólinn minn..



Fjöldi svara: 121

### Nemendur\_2006

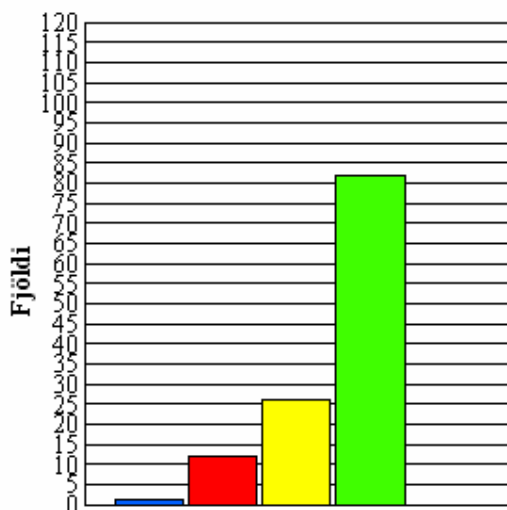
#### 3. Í frímínútum er oftast .....



- 33,88% Mjög gaman
- 61,98% Gaman
- 3,31% Ekki gaman
- 0,83% Leiðinlegt

Fjöldi svara: 121

#### 4. Er þér strítt í skólanum?

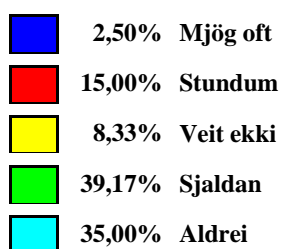
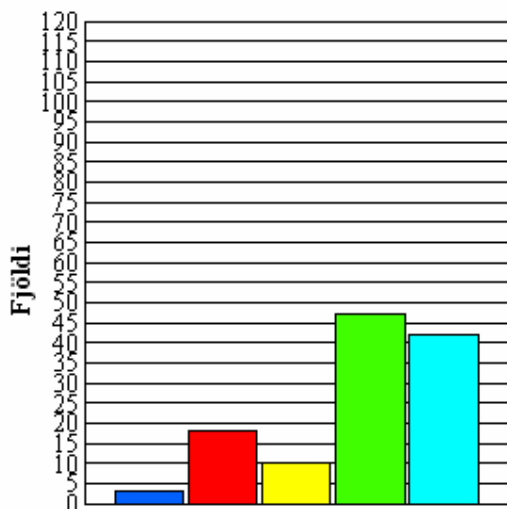


- 0,83% Oft
- 9,92% Stundum
- 21,49% Sjaldan
- 67,77% Aldrei

Fjöldi svara: 121

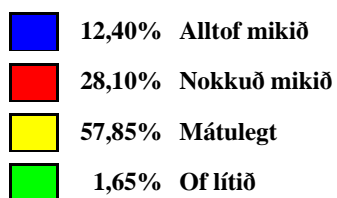
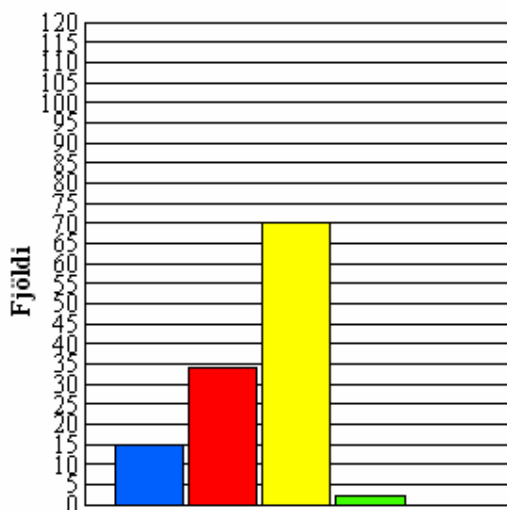
## Nemendur\_2006

### 5. Ertu kvíðin(n) í skólanum?



Fjöldi svara: 120

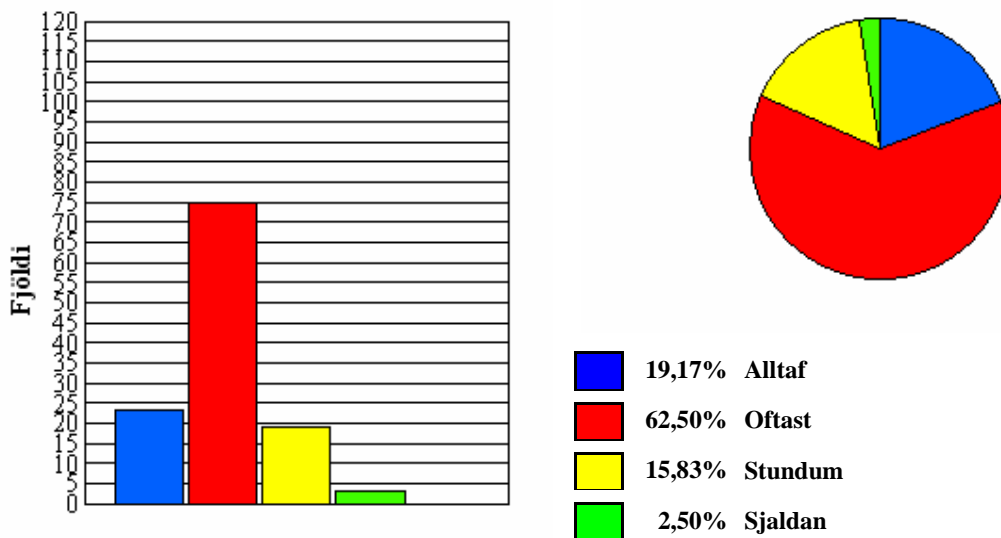
### 6. Heimanámið sem sett er fyrir í skólanum er.....



Fjöldi svara: 121

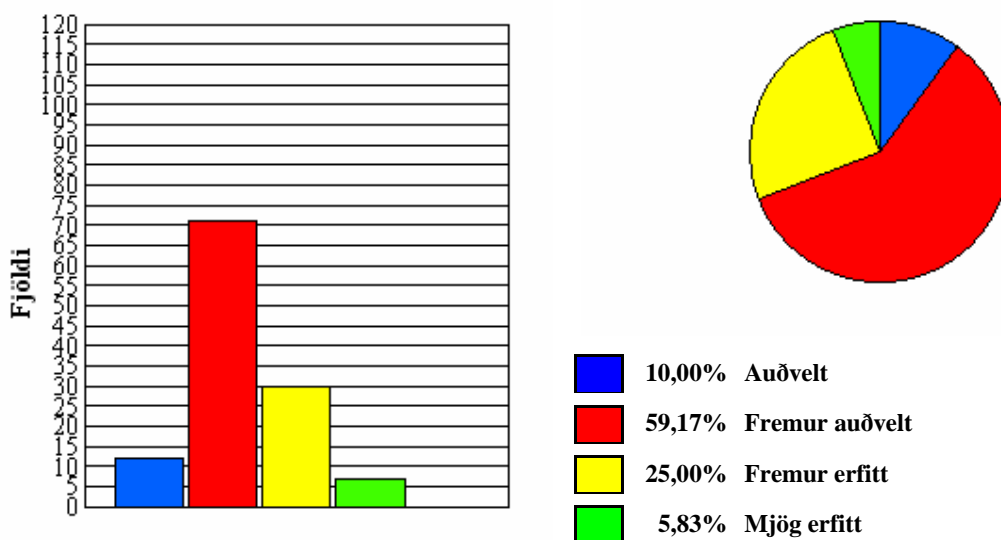
## Nemendur\_2006

### 7. Í kennslustundum fylgist ég vel með....



Fjöldi svara: 120

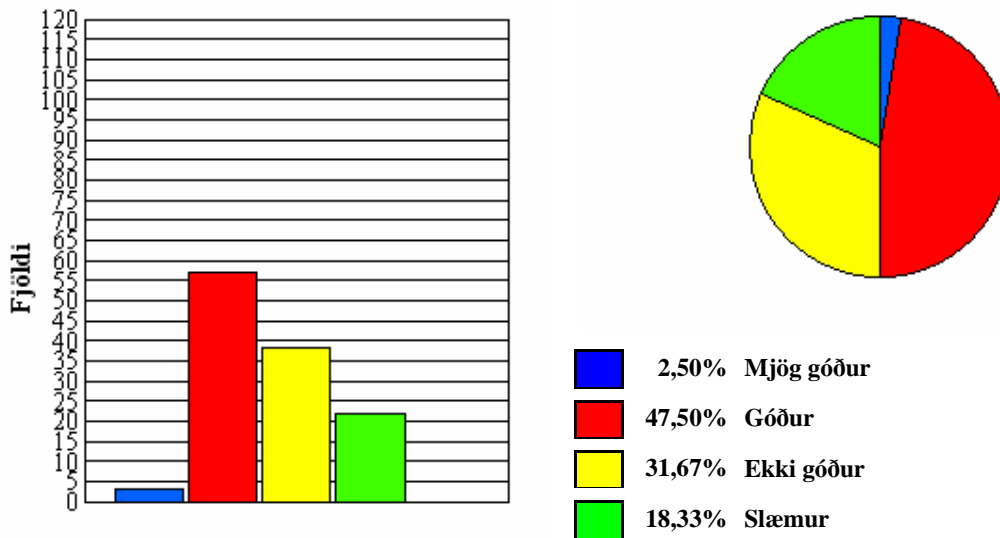
### 8. Mér finnst námið yfirleitt .....



Fjöldi svara: 120

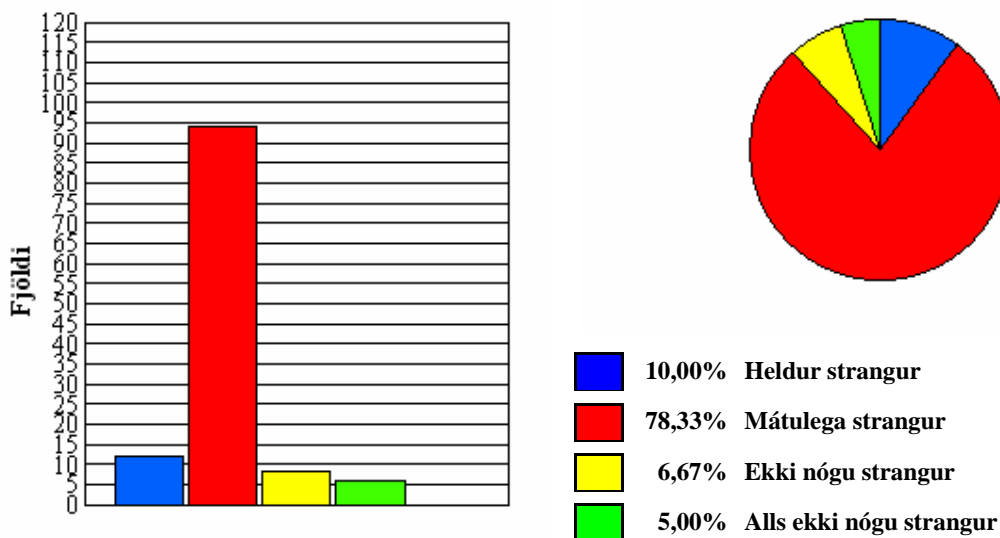
## Nemendur\_2006

### 9. Er vinnufriður í kennslustundum?



Fjöldi svara: 120

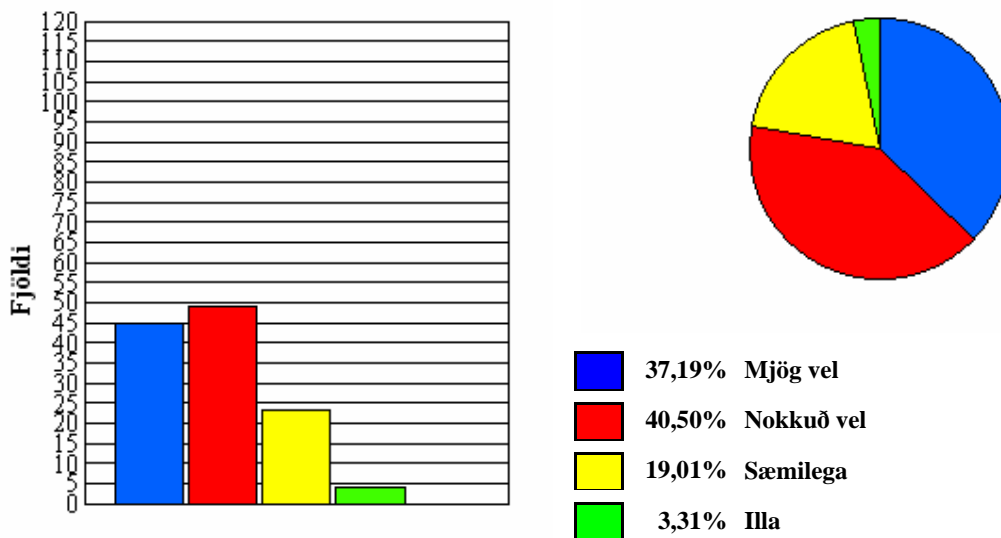
### 10. Kennarinn sem kennir mér mest er.....



Fjöldi svara: 120

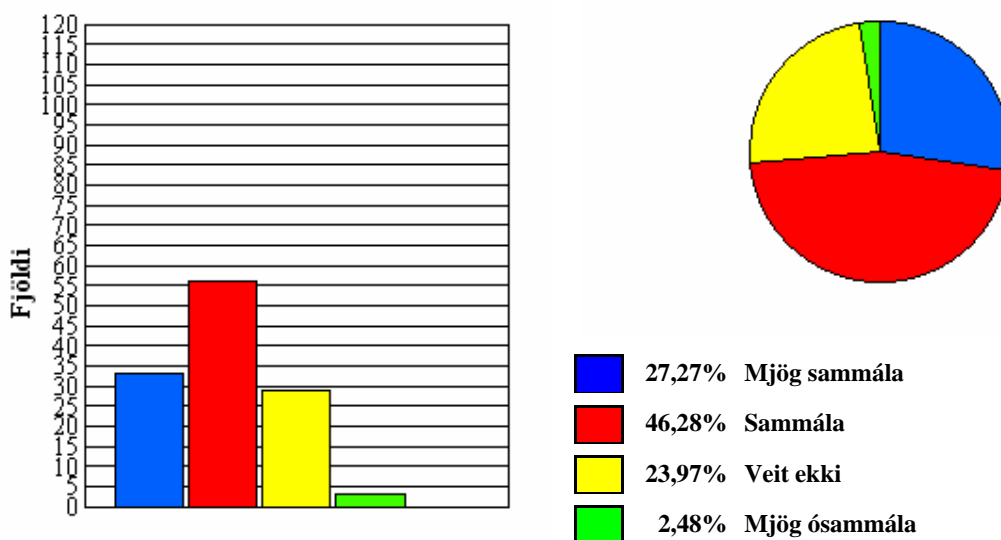
## Nemendur\_2006

### 11. Kennarinn sem kennir mér mest útskýrir námsefnið.....



Fjöldi svara: 121

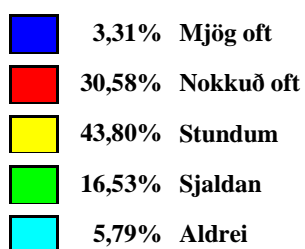
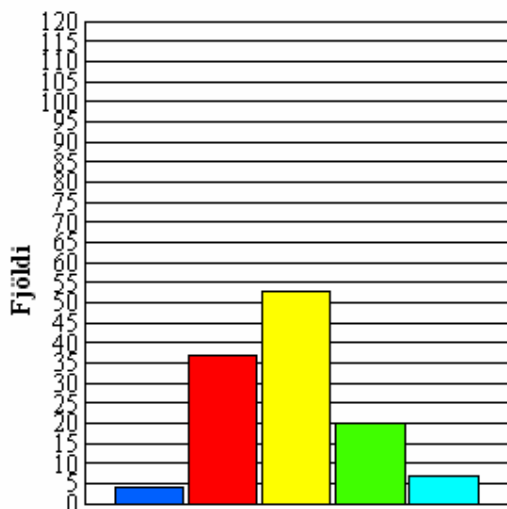
### 12. Kennarinn sem kennir mér mest er mjög hjálpsamur.



Fjöldi svara: 121

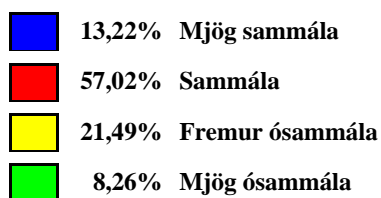
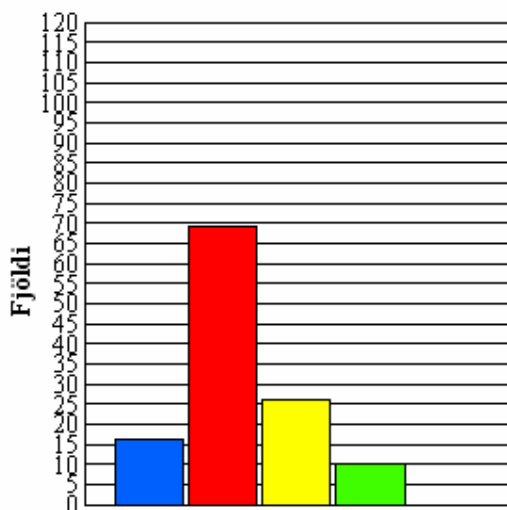
## Nemendur\_2006

### 13. Í skólanum er mér hrósað.....



Fjöldi svara: 121

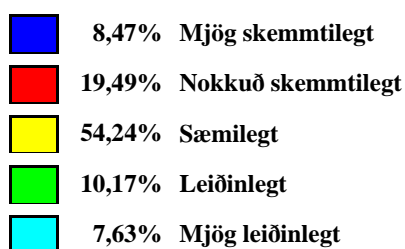
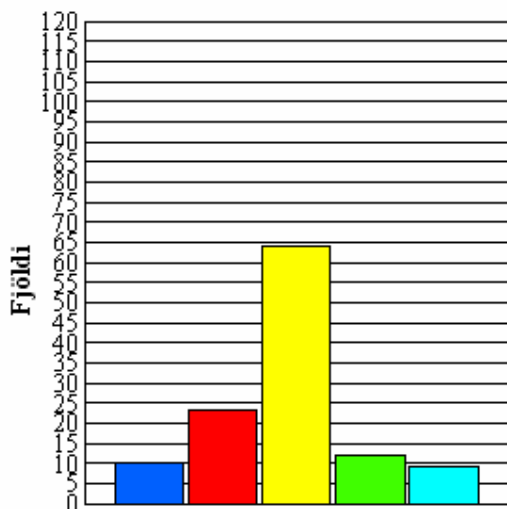
### 14. Flestir skóladagar eru fljótir að líða



Fjöldi svara: 121

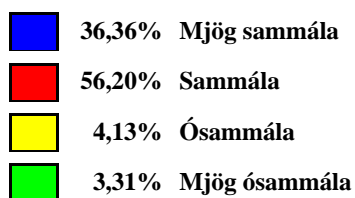
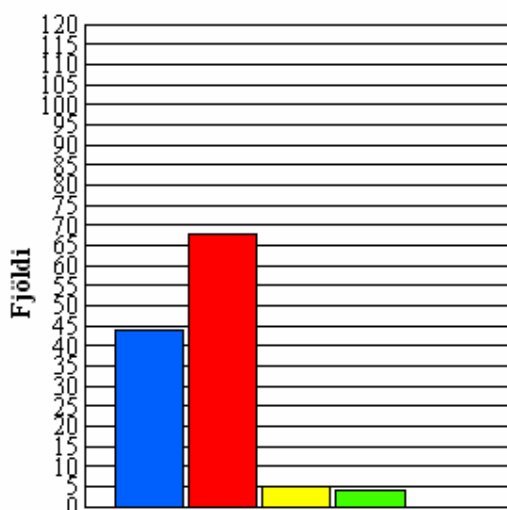
## Nemendur\_2006

### 15. Námsefnið í skólanum er .....



Fjöldi svara: 118

### 16. Mér líkar vel í bekknum mínum

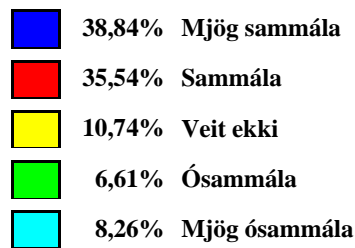
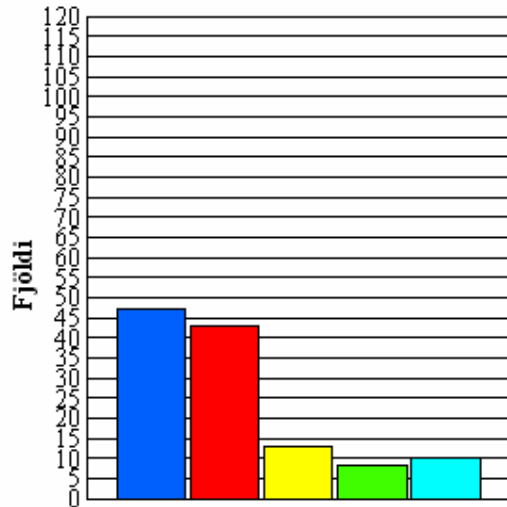


Fjöldi svara: 121



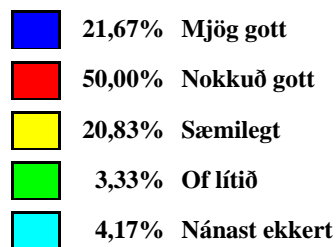
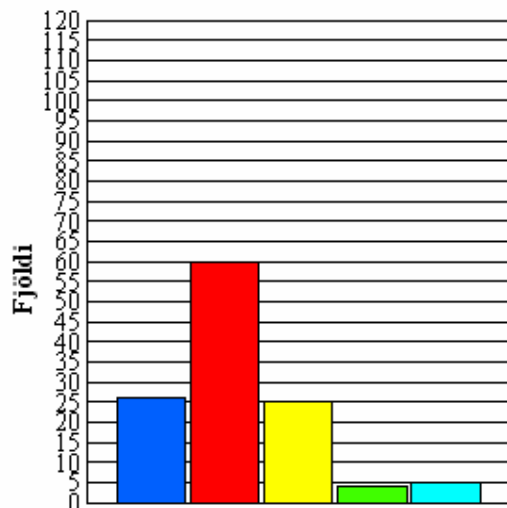
## Nemendur\_2006

### 17. Ég á marga góða vini í bekknum



Fjöldi svara: 121

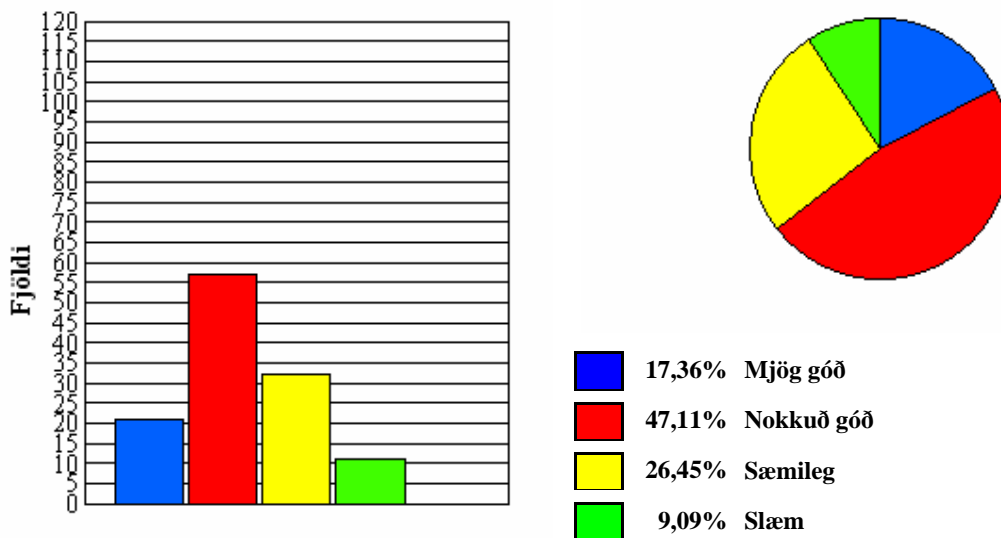
### 18. Félagslífið í skólanum er .....



Fjöldi svara: 120

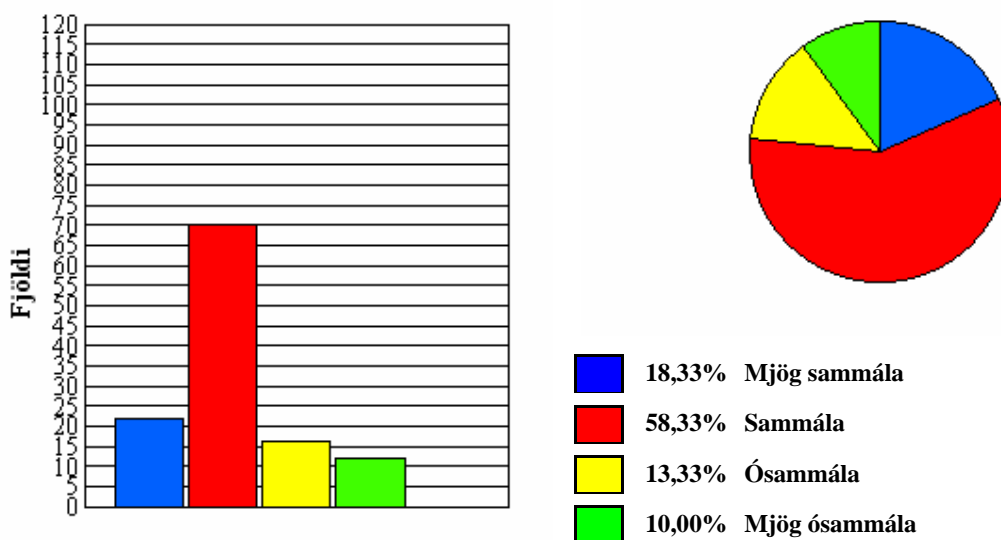
## Nemendur\_2006

### 19. Aðstaða nemenda í frímínútum er .....



Fjöldi svara: 121

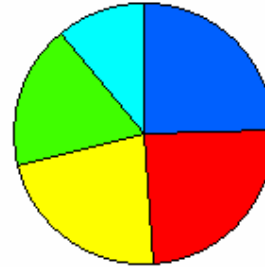
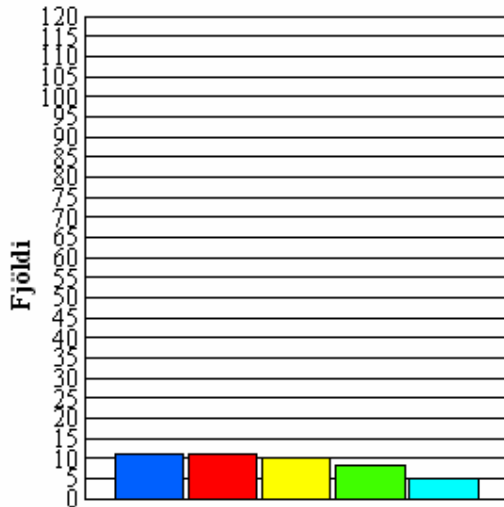
### 20. Mér þykir vænt um skólann minn



Fjöldi svara: 120

### Nemendur\_2006

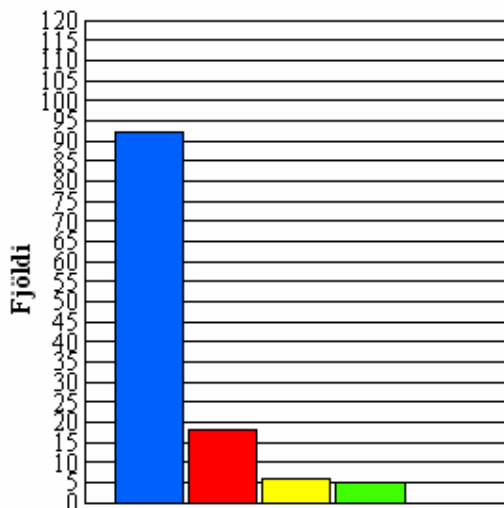
#### 21. (Ef þú hefur verið í öðrum skóla) Árskóli er.....



- 24,44% Mun betri
- 24,44% Talsvert betri
- 22,22% Jafngóður
- 17,78% Heldur verri
- 11,11% Mun verri

Fjöldi svara: 45

#### 22. Ég vinn heimaverkefni

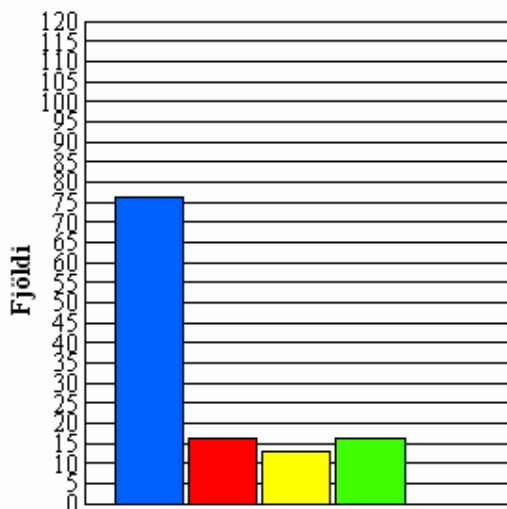


- 76,03% Flesta daga
- 14,88% 1-3 skipti í viku
- 4,96% Óreglulega
- 4,13% Sjaldan eða aldrei

Fjöldi svara: 121

### Nemendur\_2006

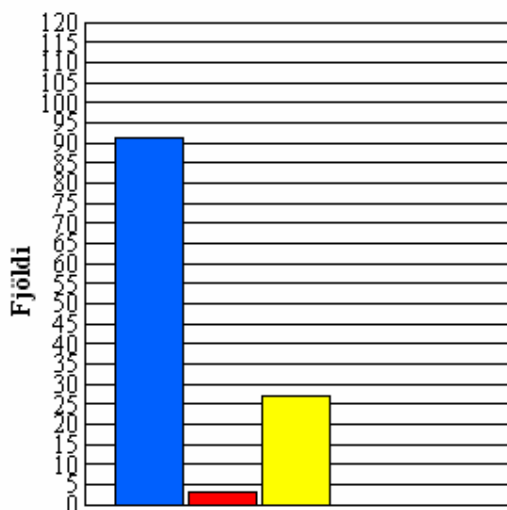
#### 23. Tekur þú þátt í íþróttum utan skólans?



- 62,81% Flesta daga
- 13,22% 1-3 skipti í viku
- 10,74% Óreglulega
- 13,22% Nei (næstum) aldrei

Fjöldi svara: 121

#### 24. Ætlar þú í framhaldsskóla?

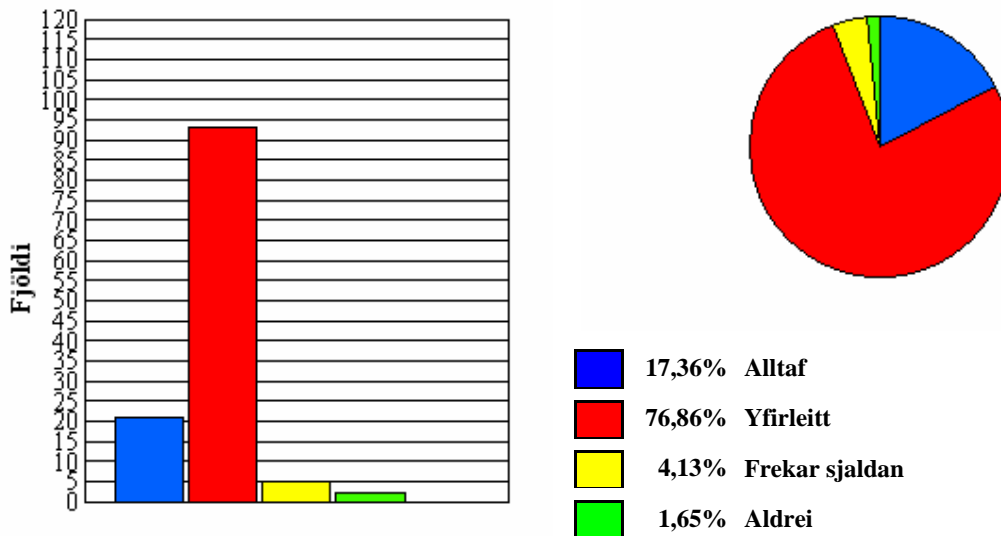


- 75,21% Já
- 2,48% Nei
- 22,31% Er ekki viss

Fjöldi svara: 121

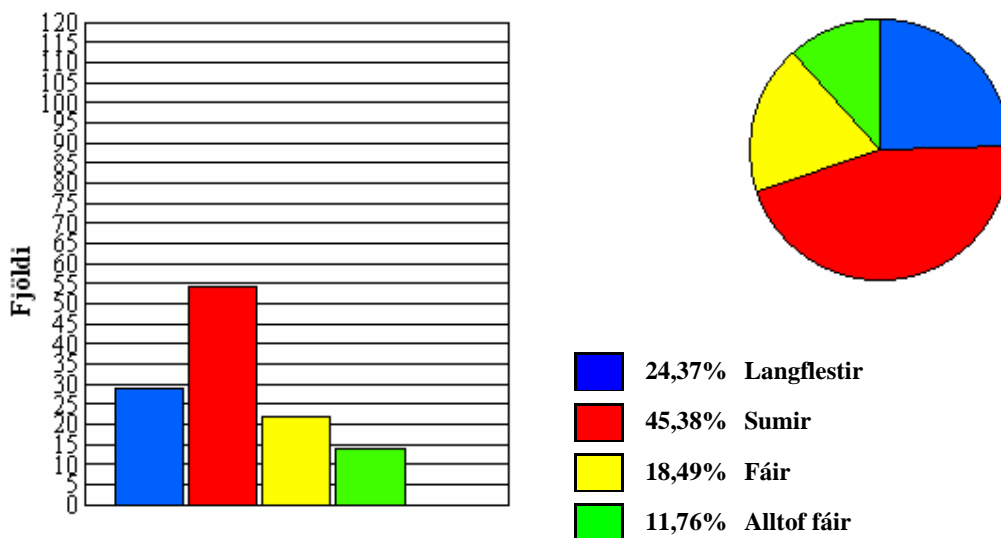
Nemendur\_2006

25. Kennararnir mínir eru stundvísir.....



Fjöldi svara: 121

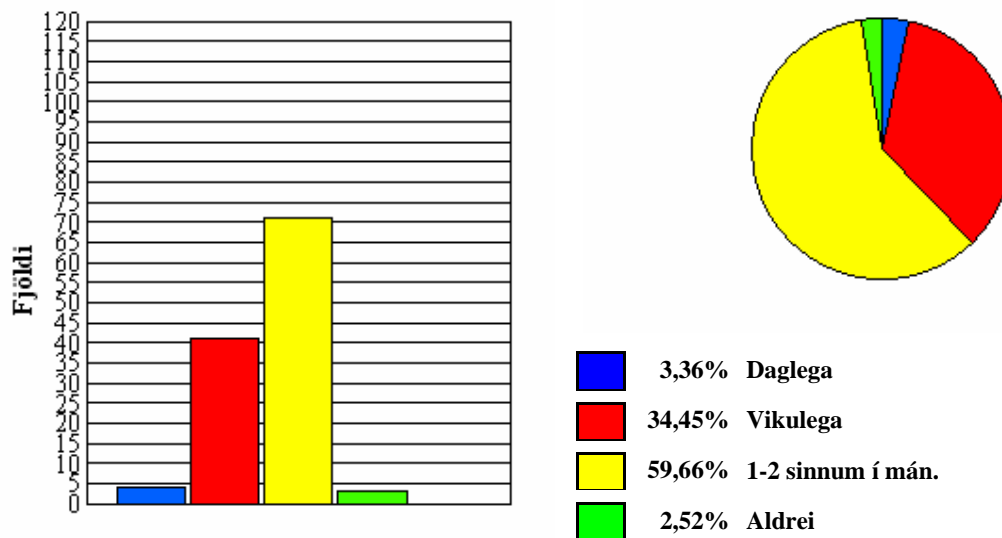
26. Kennararnir taka tillit til þess að við erum ólík og þurfum mismunandi verkefni .....



Fjöldi svara: 119

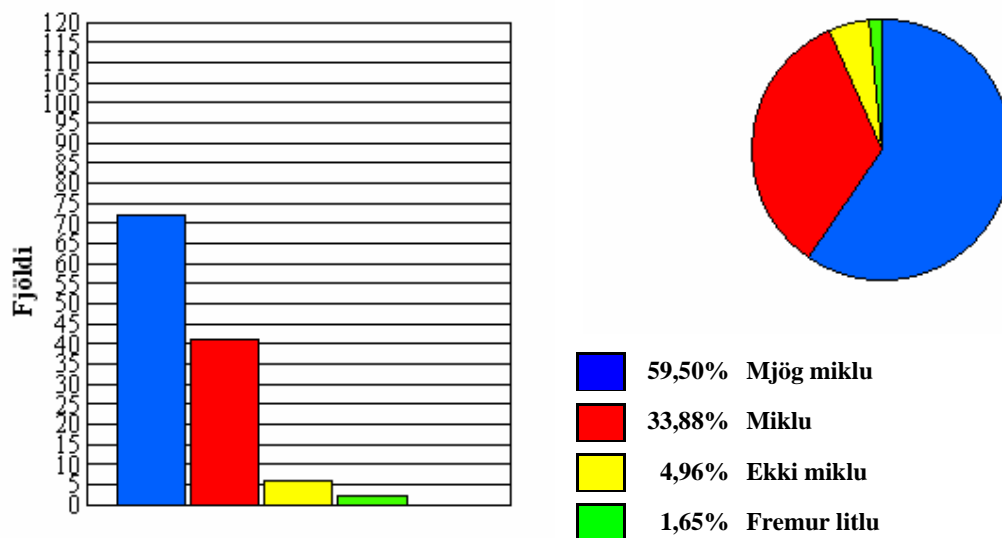
## Nemendur\_2006

### 27. Skólastjórinn kemur í bekkinn



Fjöldi svara: 119

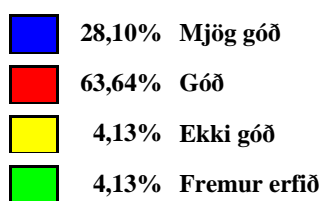
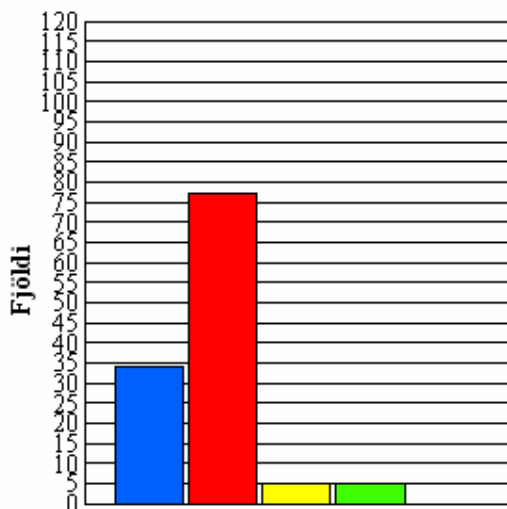
### 28. Það skiptir mig máli að standa mig vel í skólanum .....



Fjöldi svara: 121

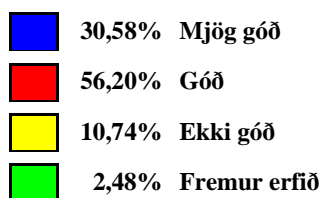
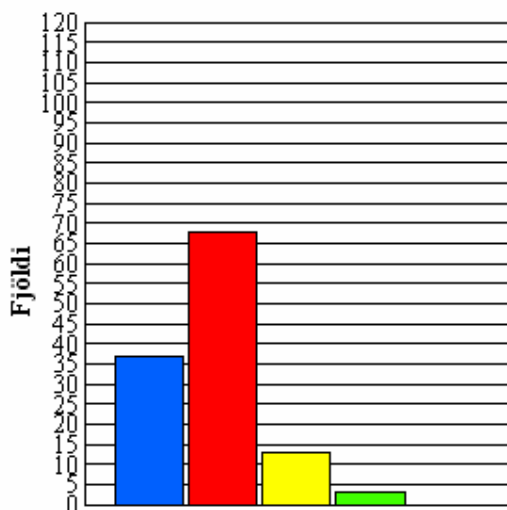
## Nemendur\_2006

### 29. Samskipti mín við kennarana eru yfirleitt.....



Fjöldi svara: 121

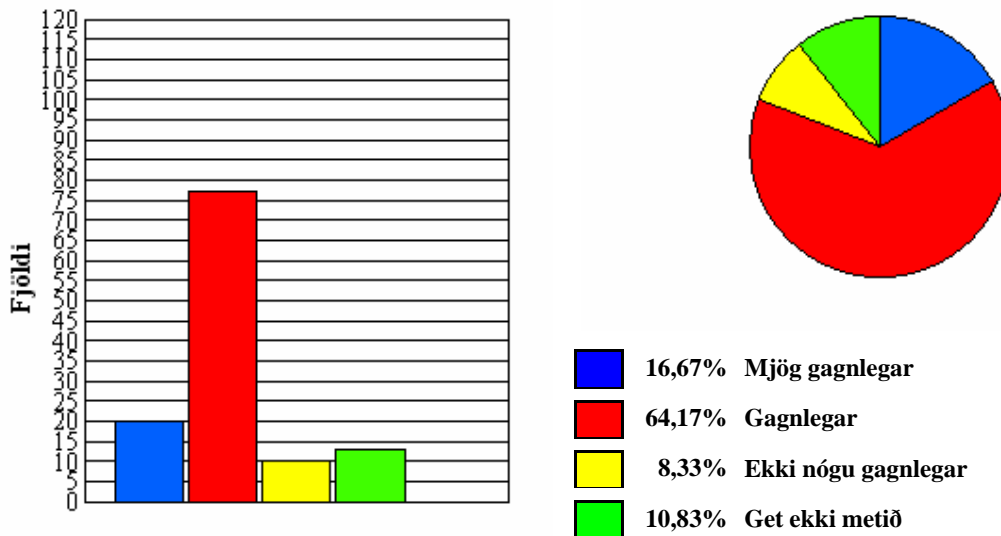
### 30. Samskipti mín við annað starfsfólk eru yfirleitt.....



Fjöldi svara: 121

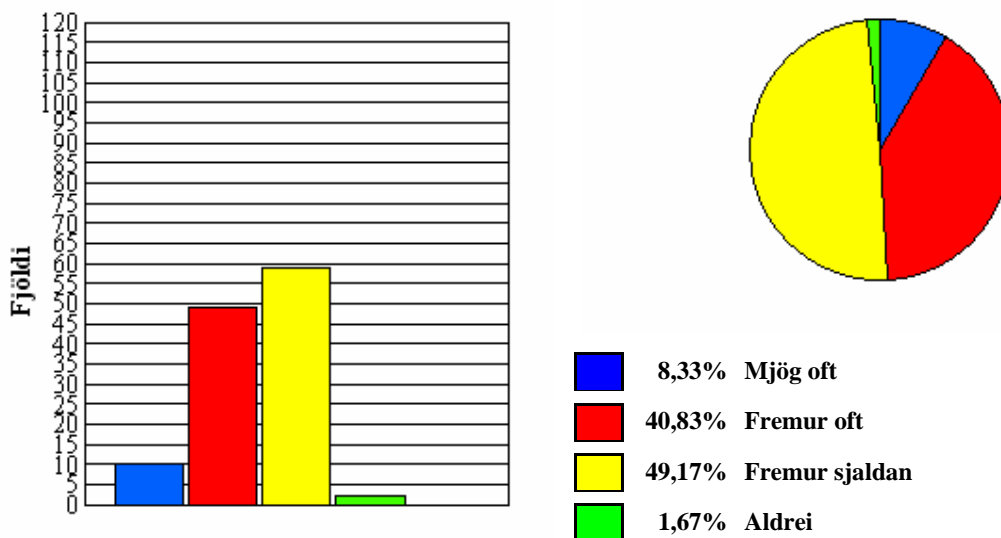
### Nemendur\_2006

#### 31. Eru námsgreinarnar í skólanum yfirleitt gagnlegar?



Fjöldi svara: 120

#### 32. Við vinnum hóp- og/eða samvinnuverkefni

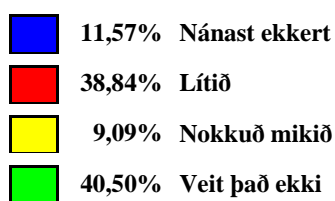
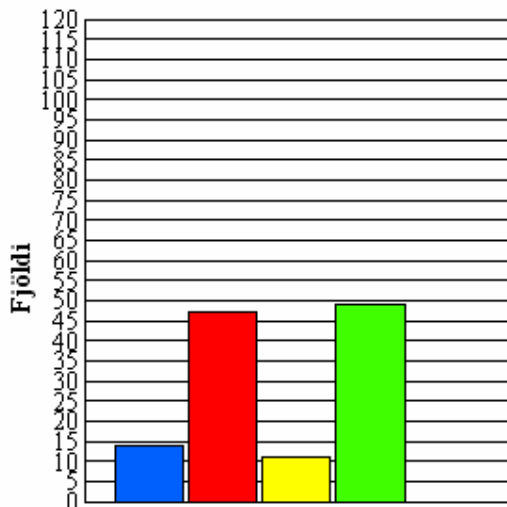


Fjöldi svara: 120



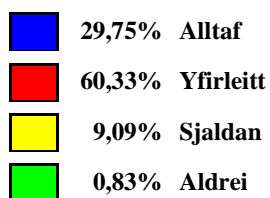
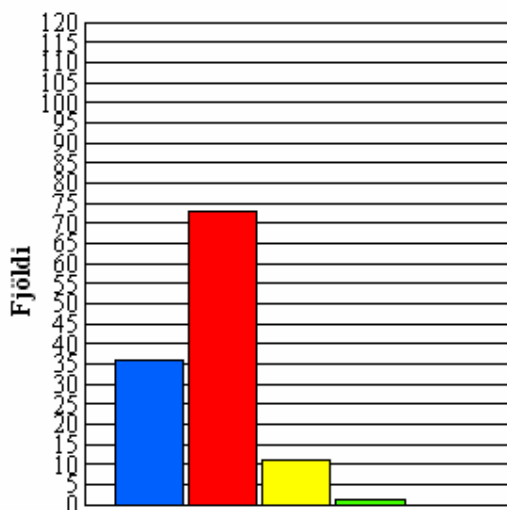
### Nemendur\_2006

#### 33. Er einelti í skólanum?



Fjöldi svara: 121

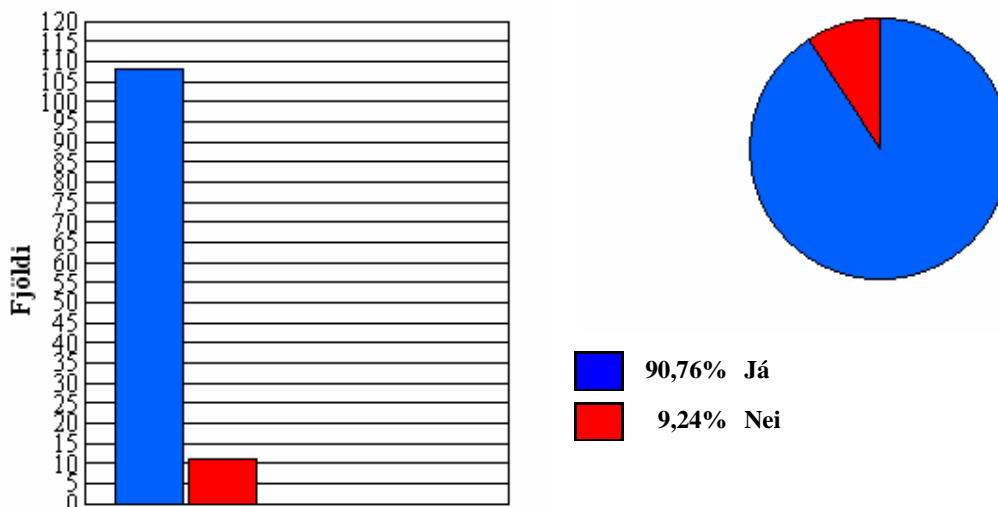
#### 34. Í skólanum fæ ég hjálp þegar ég þarf á að halda.....



Fjöldi svara: 121

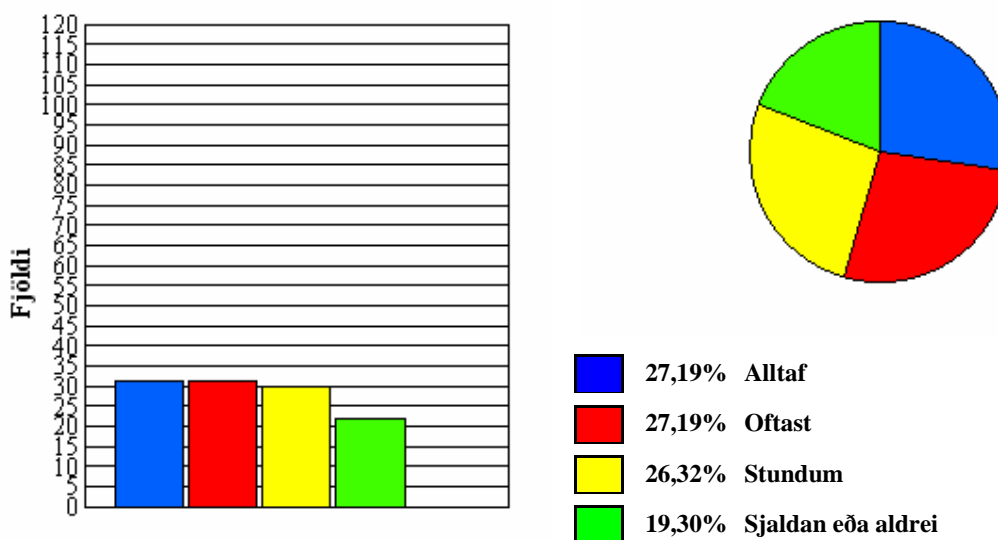
## Nemendur\_2006

### 35. Þekkirðu útivistarreglurnar fyrir þinn aldur



Fjöldi svara: 119

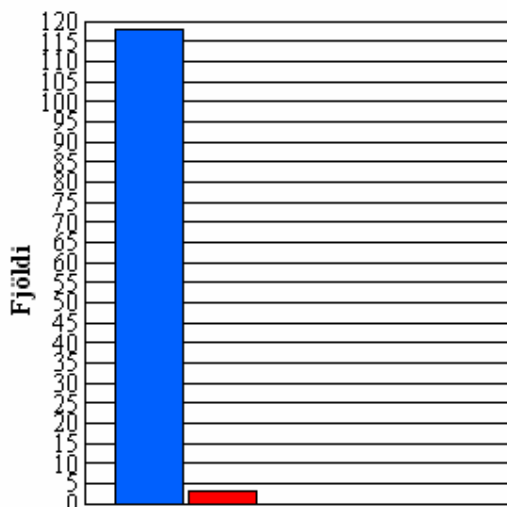
### 36. (Ef svarið í næstu á undan var já) - ferðu eftir reglum um útivistartíma?



Fjöldi svara: 114

Nemendur\_2006

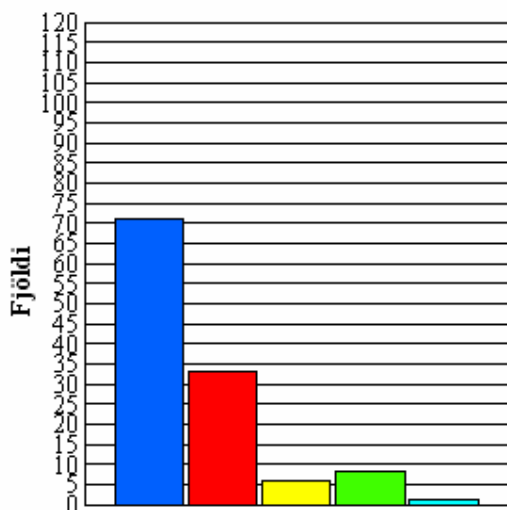
37. Hefur þú aðgang að tölvu heima hjá þér?



97,52% Já  
2,48% Nei

Fjöldi svara: 121

38. (Ef svarið við spurningunni á undan var já) - hve oft notar þú tölvuna?

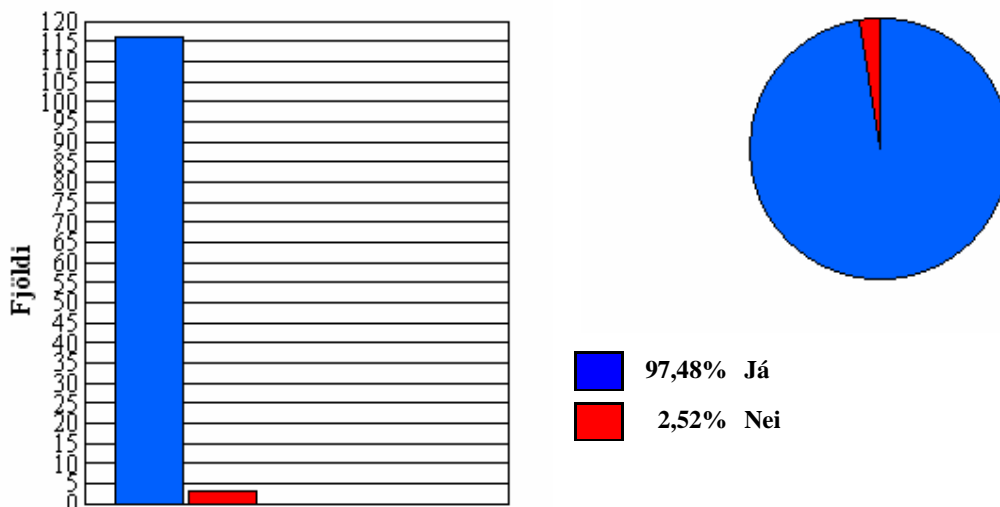


59,66% Daglega  
27,73% Tvisvar-þrisvar í viku  
5,04% Einu sinni í viku  
6,72% Sjaldnar  
0,84% Aldrei

Fjöldi svara: 119

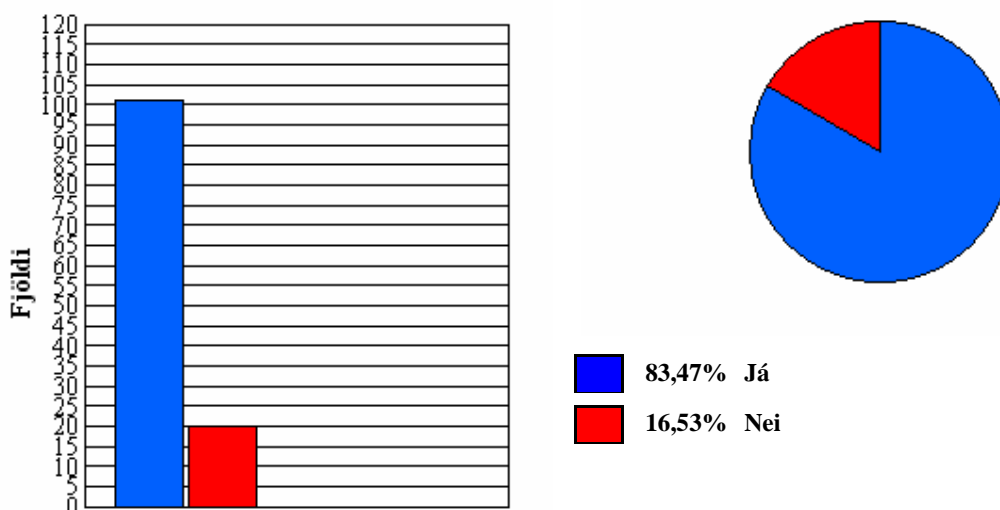
### Nemendur\_2006

39. Er aðgangur að Interneti heima hjá þér (ef þið eruð með tölvu)?



Fjöldi svara: 119

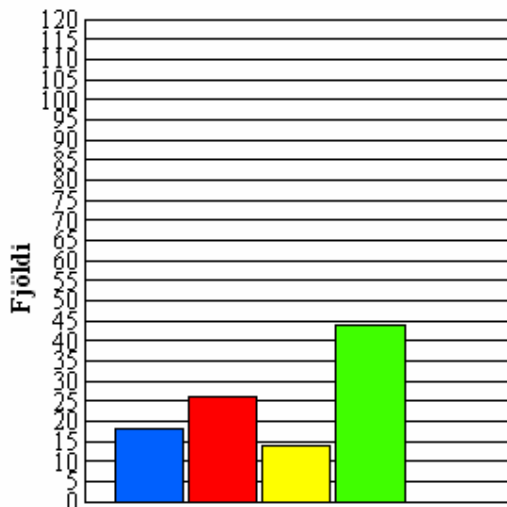
40. Áttu netfang (fyrir tölvupóst)?



Fjöldi svara: 121

### Nemendur\_2006

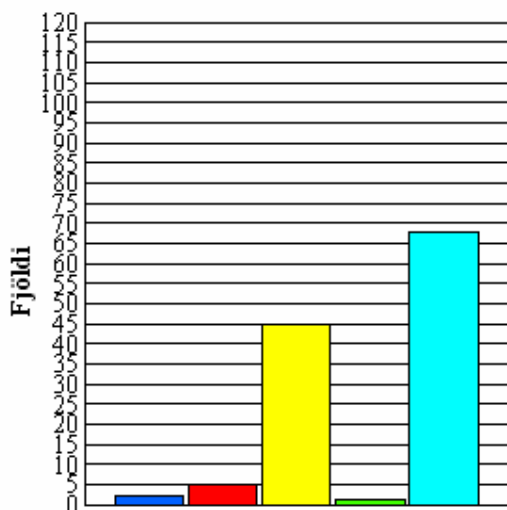
41. (Ef svarið í nr. 40 var já) hvað notar þú tölvupóst oft?



- 17,65% Daglega
- 25,49% Tvisvar-þrisvar í viku
- 13,73% Einu sinni í viku
- 43,14% Sjaldnar

Fjöldi svara: 102

42. Notarðu Internetið?

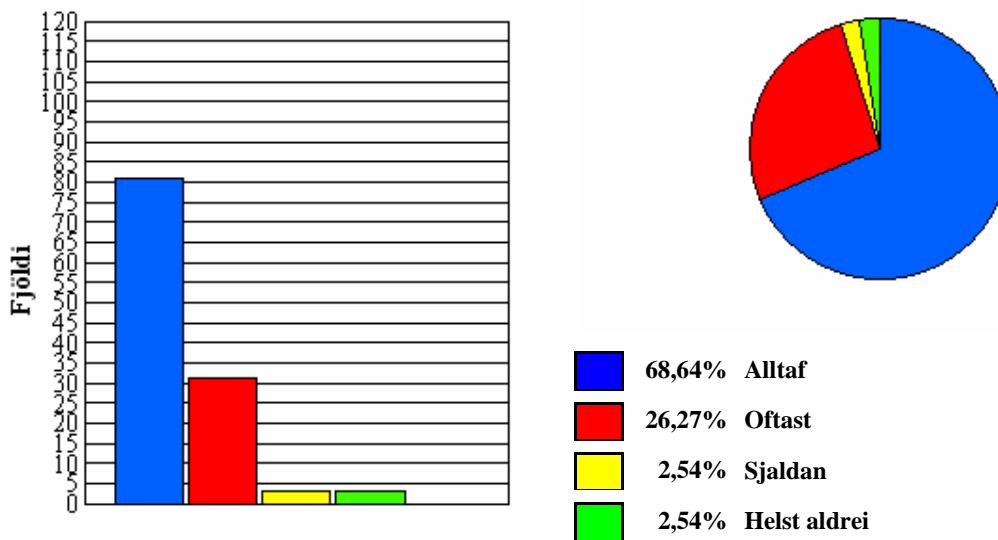


- 1,65% Nei
- 4,13% Mjög lítið
- 37,19% Skoða, fer í leiki
- 0,83% Nota það í náminu
- 56,20% Nota bæði í leik og námi

Fjöldi svara: 121

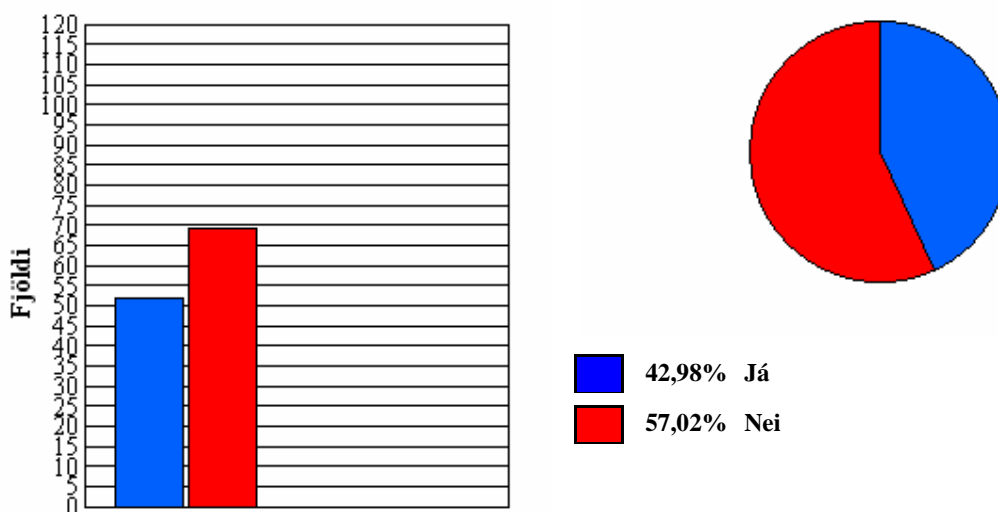
### Nemendur\_2006

#### 43. Ferðu eftir reglum varðandi tölvurnar í skólanum?



Fjöldi svara: 118

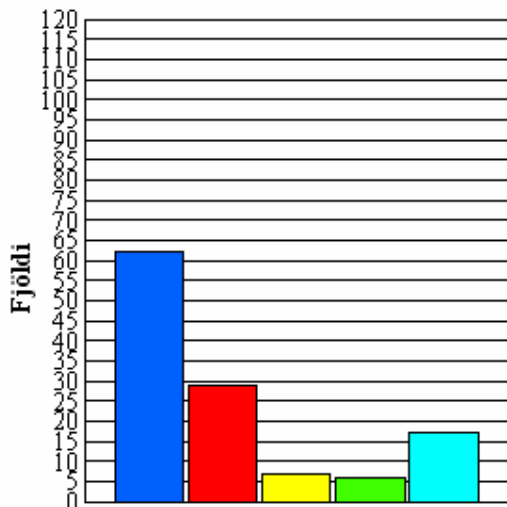
#### 44. Áttu þína eigin blogg síðu á Netinu?



Fjöldi svara: 121

Nemendur\_2006

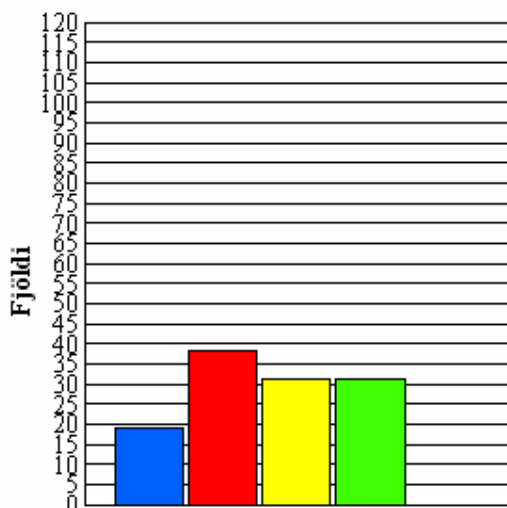
45. Notarðu MSN eða sambærilegar spjallrásir?



- 51,24% Daglega
- 23,97% Tvisvar-þrisvar í viku
- 5,79% Einu sinni í viku
- 4,96% Sjaldnar
- 14,05% Aldrei

Fjöldi svara: 121

46. Hvað finnst þér um fyrirkomulag nestismála í skólanum?

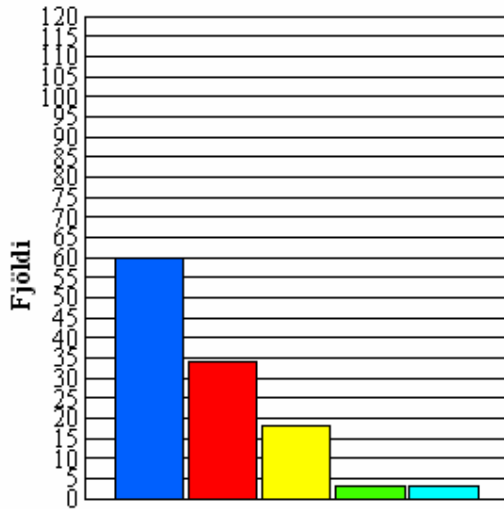


- 15,97% Mjög ánægð(ur)
- 31,93% Fremur ánægð(ur)
- 26,05% Fremur óánægð(ur)
- 26,05% Mjög óánægð(ur)

Fjöldi svara: 119

Nemendur\_2006

47. Myndir þú nýta þér að kaupa heita máltíð í skólanum í hádeginu, ef það stæði til boða?



- 50,85% Alltaf
- 28,81% Oft
- 15,25% Stundum
- 2,54% Sjaldan
- 2,54% Alls ekki

Fjöldi svara: 118